

CRANE 120



The Goliath among our light cranes!

Highest ABC-Light-Crane
up to 12 m (39.3 ft) Total length

Payload up to 25 kg

Extremely light and rigid

Set-up in less than 20 minutes

**Possible one man operation for Crane,
Remote head and Camera (Zoom & Focus)**

**Up to 6 different assembly lengths
(12 / 10,5 / 9 / 7 / 5,5 / 4 versions)
incl. strengthened rig sets**

Packed length only 1,80 m (5.91 ft)

Use of round or square counterweights

**MADE
IN
GERMANY**

**starting at
8,400 €**
For 7m Version



Events



Documentary



Football



HIGHLIGHTS



Crane Head



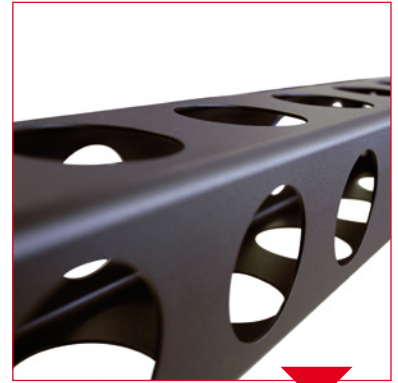
Integrated 80mm mount for positioning of ABC Remote Heads allows 360° turns.
Crane head is also available with Mitchell Adapter.
Precise Levelling of crane head.

Rotation section

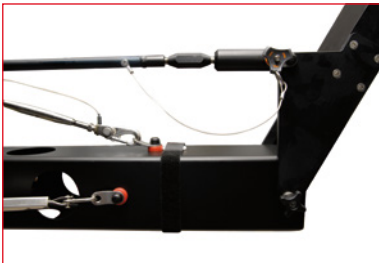


Including vertical and horizontal break system.
The built-in high precision pivot bearing allows a smooth and constant rotary motion.

Crane segments

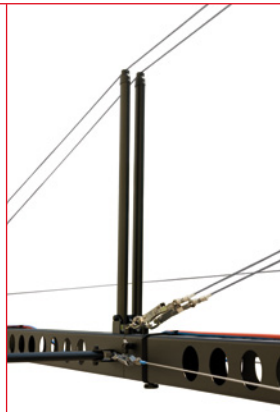


A specially engineered square tube construction provides extreme rigidity and light weight. Additionally, crane segments are bolted together for an optimum resistance to torsion!
Circular spaces in the segments allow weight reduction.

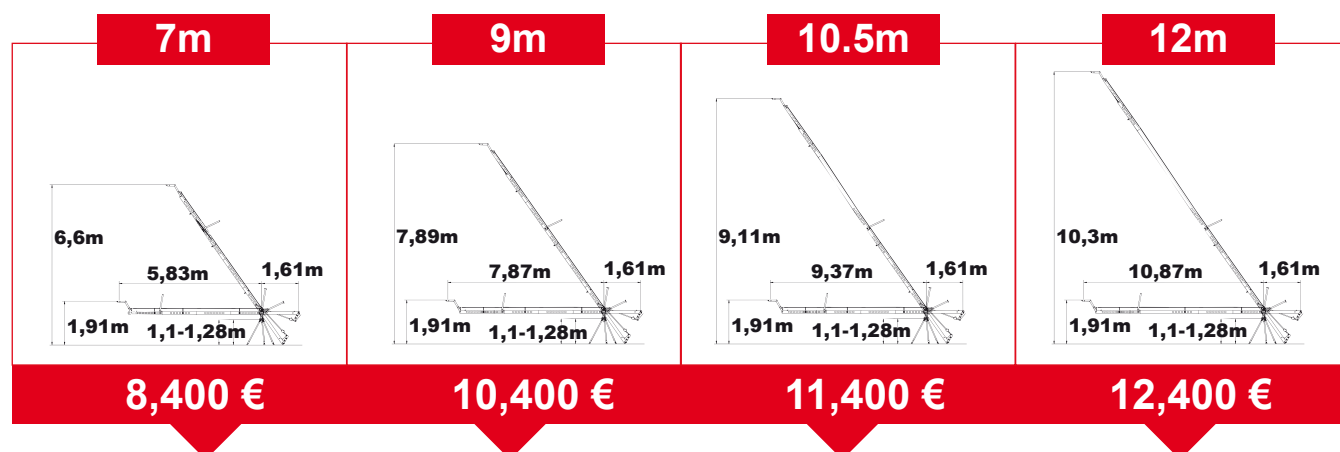


Weight support segment

Suitable for round and angled weights.
Easy mount for single operator kit.



VERSIONS & PRICES



Weight
Crane only

72 kg

83 kg

93 kg

116 kg

Packing
dimensions (cm)

2 pcs: 177x37x29
1 pc: 80x55x25

2 pcs: 177x37x29
1 pc: 80x55x25

2 pcs: 177x37x29
1 pc: 80x55x25

3 pcs: 177x37x29
1 pc: 80x55x25

Max.
payload

30 kg

25 kg

20 kg

20 kg

Counterweight

160 kg

160 kg

208 kg

288 kg

Reference

8315-03

8315-0

8315-01

8315-02

Possible
versions

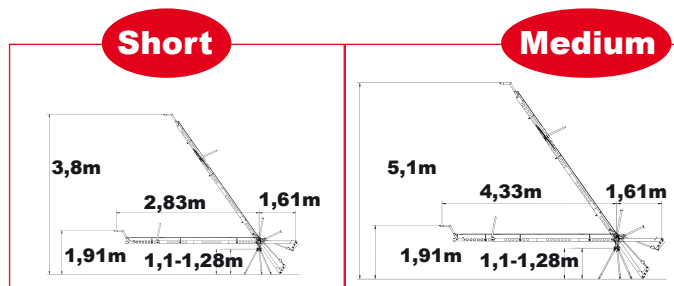
3 versions:
Short
Medium
Large (7m)

4 versions:
Short
Medium
Large (7m)
9m

5 versions:
Short
Medium
Large (7m)
9m
10.5m

6 versions:
Short
Medium
Large (7m)
9m
10.5m
12m

Short and Medium versions dimensions :



Package includes:

- ▶ Camera crane arm with rotation section and Weight support segment.
- ▶ 1 Manual
- ▶ 3 Soft bags

ACCESSORIES



Remote heads



Item No. 8416-0

Alex analog

Robust Remote Head
Cameras up to 15kg
Net weight 6kg

Price: 5,950 €



Item No. 8416-01

Alex digital

Price: starting at 8,250 €

Robust broadcast remote head
Cameras up to 15kg
Net weight 6kg
With V-mount battery adapter
With programmable motors
Possibility of one-man control* (accessories)
Possibility of controlling camera zoom and focus* (accessories)



Pelé XL 35

Light Digital Remote-Head system
Cameras up to 20kg
Net weight 9kg
With V-mount battery adapter
With programmable motors

Possibility of one-man control* (accessories)
Possibility of controlling camera zoom and focus* (accessories)

*When lenses for broadcast with integrated motors are used



Item No. 8418-0

Price: starting at 10,800 €



Item No. 8472-0/8472-01

P10 - 2 or 3 Axis

Extremely silent movement
Cameras up to 25 kg for 2-Axis Version
Cameras up to 15 kg for 3-Axis Version
Very fast movement

Price: starting at
19,800 €

Accessories for remote heads Alex Digital/Pelé/P10-2 or 3 axis:

Cable set* Canon SD

Item No. 841210-0 **270 €**

Cable set* Canon HD

Item No. 841212-0 **320 €**

Cable set* Canon HD-S

Item No. 841213-0 **380 €**

Cable set* Fujinon SD/HD

Item No. 841220-0 **220 €**

Cable set* Angenieux

Item No. 841215-0 **270 €**

Single man control for Crane 120

Item No. 8414-0 **1,950 €**

Power supply 220 V switchable to 110 V / 24 V DC

Item No. 8412-500 **980 €**

*The cable set includes zoom and focus control cables
for broadcast, with integrated motors.

Tripod



Item No. 8321-03

Bullstand

Heavy duty tripod with levelling system
Safety pins for Crane 100/120
Max. payload : 250kg

Price: **1,450 €**



Item No.
7703-0 / 7707-0 / 7715-0

Counterweights

4 / 8 / 16 kg
30mm Ø hole
Handle for light transport

Price: **45 / 55 / 75 €**



Item No.
8315-30

Monitor holder

For crane 120
Two fixing screws and swiveling arm

Price: **230 €**

Dollies



Item No.
7510-0SET

Base Dolly CD 5

Standard Base Dolly CD 5 incl. crane column
for crane 120 with extension

- ▶ Base frame
- ▶ Pneumatic or Studio wheels 4 pcs.
- ▶ Push bar
- ▶ Crane column

Price: starting at 4,120 €



**Base Dolly CD5
with crane column**



Item No. 7511-0

Track wheels CD 5

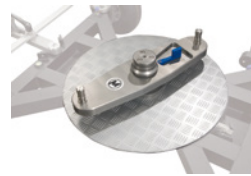
Price: 2,490 €



Item No. 7510-4000

Platform for CD5

Price: 1,190 €



Item No. 7513-0

Base plate Euro turnstile mount

Price: 1,950 €



Item No. 7520-0SET

Levelling legs for CD5

Price: 690 €



Item No.
7530-0SET

Base Dolly CD 6

Broad basis Dolly CD 6 incl. crane column
for crane 120 with extension

- ▶ Base frame
- ▶ Pneumatic or Studio wheels 4 pcs.
- ▶ Push bar
- ▶ Crane column

Price: starting at 4,340 €



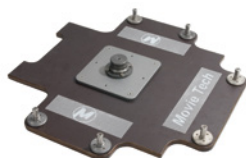
**Base Dolly CD6
with crane column**



Item No. 7532-0SET

Track wheels CD6

Price: 2,490 €



Item No. 7530-300

Platform for CD6

Price: 1,290 €



Item No. 7513-0

Base plate Euro turnstile mount

Price: 1,950 €



Item No. 7531-0SET

Levelling legs for CD6

Price: 860 €



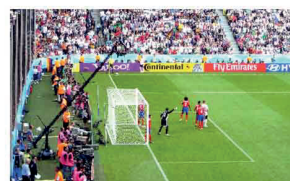
The MovieTech AG is based in Munich with subsidiaries in Balerna and Prague. As one of the leading manufacturers in its field, it produces and markets products and solutions for the film industry. The MovieTech product range concentrates on the areas of: Camera cranes, dollies, remote heads and corresponding accessories, as well as studio and stage techniques. The company's mission is to manufacture professional film and studio equipment that facilitates the implementation of creative ideas and simplifies the work on the set or in the studio.



www.movietech.de



Steadycam systems - Light dollies - Light cranes



www.abc-products.de



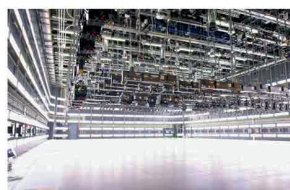
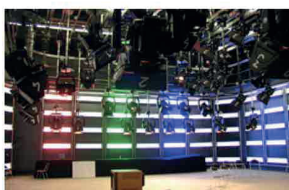
Pantographs - Hoists - Telescopes - Trolleys



www.mts-germany.com



Rail systems - Studio and stage engineering



www.lastro.de