

New! from MovieTech

Scooter Dolly



What is special about the Scooter Dolly ?

- The **Scooter Dolly system** allows sliding camera movings in arbitrary length and height



- Rapid levelling - no wooden foundation
- No bazookas necessary - height will be regulated by tripods
- Less space required on set



More advantages:

- Pressure of wheels adjustable
- Special wheels with low noise roll covering!
- Integrated brake

Technical data

Dimensions and weight

Weight (only Dolly) 4,7 kg

Size (Dolly) 336 x 302 mm

Gauge (outside) 220 mm

Inch-thread (for Monitor holder etc.)

2 x 1/4" on the platform

2 x 3/8" on the platform

2 x 3/8" per 1x front edge

Set consists of:

- Scooter Dolly with clamp ring 80mm
- Track connector (2x)
- Ground plate (2x)
- Case plastic with foaming mold
- Manual

Price: ca. Euro 2900.- (net price)

Track profiles (set of 2 pieces):

0,90m Netto Euro 170.- (bag ca. 110.-)

1,60m Netto Euro 250.- (bag ca. 130.-)

2,30m Netto Euro 330.- (bag ca. 150.-)

Accessories



8530-2 Light bazooka clamp ring



2032-1Set Bowl insert 100mm



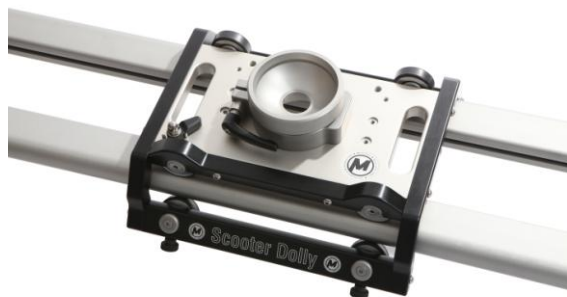
2031-3Set Bowl insert 150mm



2041-10Set Mitchell base plate



8327-0 Bowl adapter 75mm



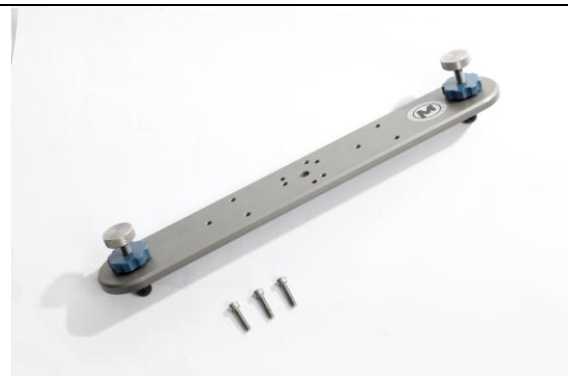
8328-0 Bowl adapter 100mm



2207-30Set Ground plate track connector



2207-50 Euromountadapter/
Schienenverbinder



2207-20 Groundplate



2207-90 Camera base plate/ Euromount



2207-50 Euromount adapter/ track connector



Monitor holder set 3/8" – 1/4" adapter, ball joints



Set MasterTrack Profile 0,90m Bag for tracks 0,90 Set MasterTrack Profile 1,60m Bag for tracks 1,60m Set MasterTrack Profile 2,30m Bag for tracks 2,30m	2500-2Set 2207-8300 2501-1Set 2207-8100 2502-1Set 2207-8200
	 2207-10 Track end stop
	 M5622 Protection cap for MasterTrack
	 2594-0 2595-0 Protection cap for track end section MasterTrack

	<p>2206-100 Push bar</p>
	 <p>2207-10 Track end stop mounted</p>
	<p>8321-0 Tripod 132X</p>
	 <p>2594-0 2595-0 Protection cap for track end section MasterTrack</p>

What is the difference between the Scooter Dolly and other systems?

Slider e.g. Kessler

Advantages Scooter:

- Tracks available in different lengths (90/160/230)
- Moves more quietly
- Higher stability – works with every camera type
- More flexible in use (on the ground/on tripods/ with euromount/ as rig)

Standard Dolly 62cm:

Advantages Scooter:

- Lower weight and packing dimensions - less accessories necessary but same result
- Faster assembling (tracks levelled in seconds)
- Usable in very narrow locations
- Extraordinary perspectives with small effort
- Only one person needed for handling!
- No bazookas needed (height may be adjusted on behalf of the tripods)



Die MovieTech AG mit Hauptsitz in München und Tochtergesellschaften in Mailand und Prag produziert und vermarktet als einer der führenden Hersteller Produkte und Lösungen für die Film- und Fernsehindustrie.

Die Produktpalette von MovieTech konzentriert sich auf die Bereiche: Kamerakräne, Dollies, Lichtsysteme, Remote Heads und entsprechendes Zubehör.

Ziel der Movie Tech AG ist die Herstellung von professionellem Filmequipment, das die Arbeit der Anwender am Set oder im Studio wesentlich erleichtert und die Umsetzung der kreativen Ideen ermöglicht.

The MovieTech AG is based in Munich with subsidiaries in Milan and Prague. As one of the leading manufacturers in its field, it produces and markets products and solutions for the film industry.

The MovieTech product range concentrates on the areas of: Camera cranes, dollies, remote heads and corresponding accessories, as well as studio and stage techniques.

The MovieTech mission is the manufacture of professional film equipment that not simplifies the work of those using it on the set or in the studio, but also facilitates the implementation of creative ideas.



www.movietech.de



Dollies – Cranes – Remote Heads



www.abc-products.de



Steadycam systems – Light dollies – Light cranes



www.mts-germany.com



Pantographs – Hoists – Telescopes – Trolleys



www.lastro.de



Rail systems – Studio and stage engineering

MovieTech AG (Germany)

Martin-Kollar-Str. 9 • 81829 München • Tel: +49 (0)89-43 68 91 3 • Fax: +49 (0)89-43 68 91 55 • E-Mail: info@movietech.de

MovieTech S.r.l. (Italia)

Viale Edison 318 • 20099 Milano • Tel: +39 (0)2 22 47 00 43 • Fax: +39 (0)2 24 41 01 63 • E-Mail: k.shore@movietech.de